

Chloramphenicol in Milk by LC-MS/MS

ACE[®]
Ultra-inert
UHPLC & HPLC Columns

Application #AN2030

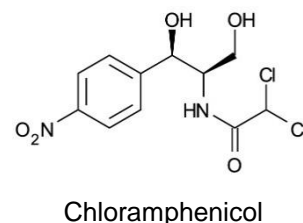
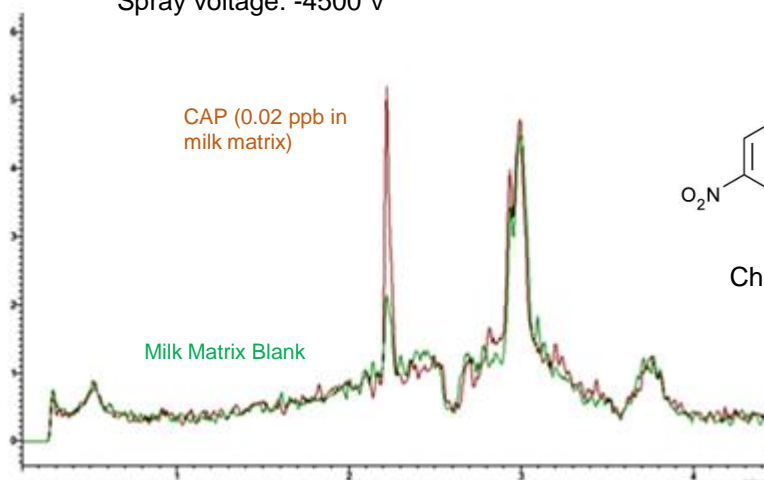
Conditions

Column: ACE 3 C18
Dimensions: 50 x 2.1 mm
Part Number: ACE-111-0502
Mobile Phase: A: H₂O
B: MeOH

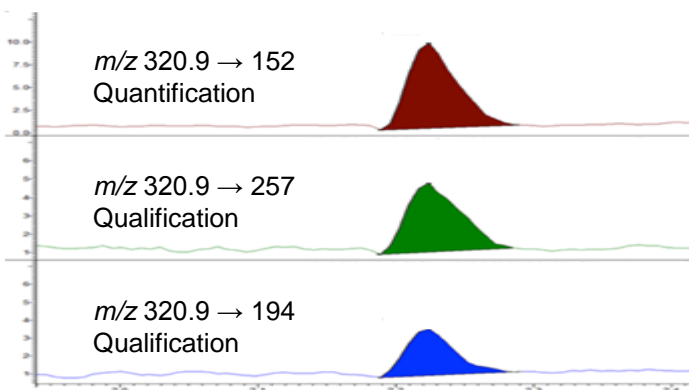
Time (mins)	%B
0.00	10
0.05	10
2.50	95
3.00	95
3.10	10
4.50	10

Flow Rate: 0.5 mL/min
Injection: 10 µL
Detection: Bruker EVOQ Elite triple quad MS
VIP heated-ESI temperature: 400 °C
Cone gas temperature: 350 °C
Spray voltage: -4500 V

TIC of 3 MRMs of 0.02 ppb chloramphenicol spiked in milk matrix



MRM chromatograms of 0.05 ppb chloramphenicol in milk



Reproduced with permission of Bruker UK Ltd

© 2015 ACT Ltd. All rights reserved. All products are available worldwide.

ACE[®]
UHPLC & HPLC
Columns

For more information contact your local ACE distributor or visit
www.ace-hplc.com or email: info@ace-hplc.com