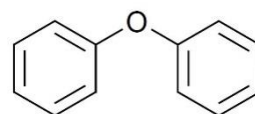


Determination of Azocyclotin

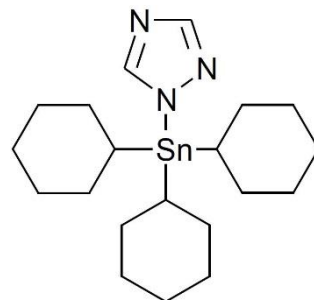
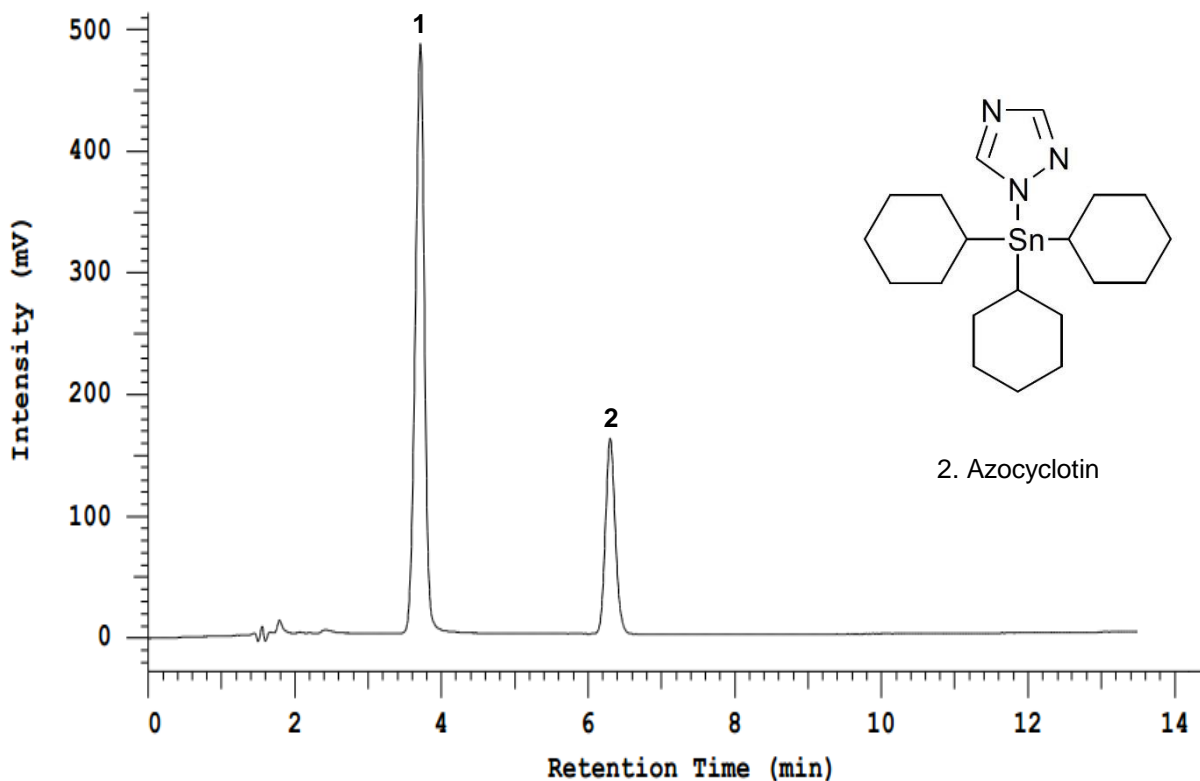
Application #AN6140

Conditions

Column: ACE Excel 5 C18-PFP
Dimensions: 150 x 4.6 mm
Part Number: EXL-1210-1546U
Mobile phase: 20 g/L sodium dihydrogen phosphate (aq.):methanol:phosphoric acid (190:820:1.5 v/v/v)
Flow Rate: 1.0 mL/min
Injection: 5 µL
Temperature: Ambient
Detection: UV, 210 nm



1. Internal standard (Diphenyl ether)



2. Azocyclotin