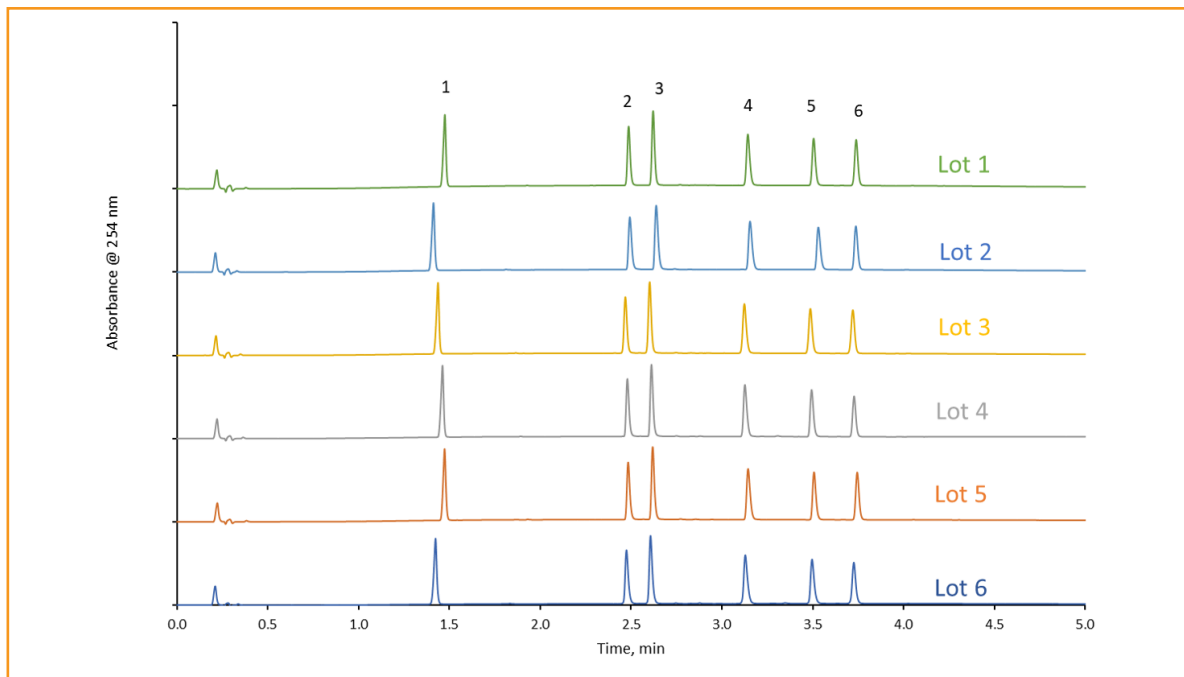




## HALO® Elevate C18 Lot-to-Lot Reproducibility

376



### TEST CONDITIONS:

Column: HALO 120 Å ELV C18, 2.7  $\mu\text{m}$ , 2.1 x 50 mm

Part Number: 92272-402

Mobile Phase A: 0.1%  $\text{NH}_4\text{OH}$ , pH:10.7

Mobile Phase B: Acetonitrile

Gradient:	Time	%B
	0.0	5
	4.0	95
	4.5	95
	5.0	5
	7.0	5

Flow Rate: 0.4 mL/min

Back Pressure: 134 bar

Temperature: 40 °C

Injection Volume: 0.5  $\mu\text{L}$

Sample Solvent: 65/35 0.1%  $\text{NH}_4\text{OH}/\text{ACN}$

Detection: UV/PDA, 254 nm

Flow Cell: 1  $\mu\text{L}$

Data Rate: 40 Hz

Response Time: 0.05 sec

LC System: Shimadzu Nexera X2

### PEAK IDENTITIES:

1. Butyl Paraben (neutral)
2. Doxylamine (base)
3. Chlorpheniramine (base)
4. Doxepin (base)
5. Amitriptyline (base)
6. Trimipramine (base)

Lot-to-lot reproducibility is crucial when developing methods. Six different lots of HALO® Elevate C18 were tested using a mix containing a neutral compound and 5 basic compounds. The average %RSD across all of the compounds was < 0.6%.