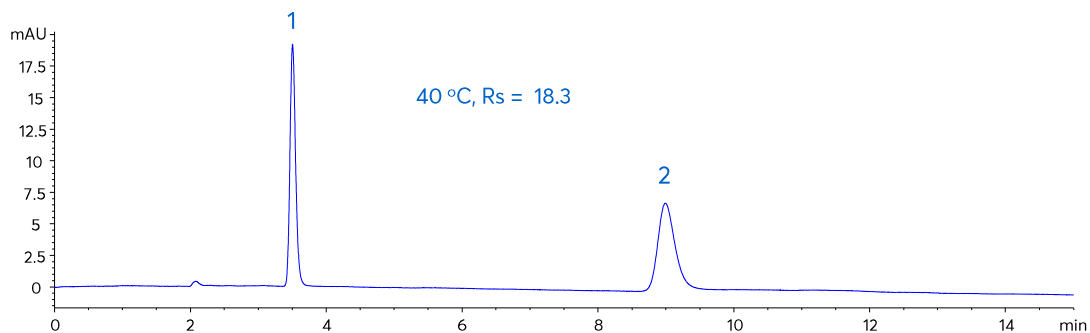
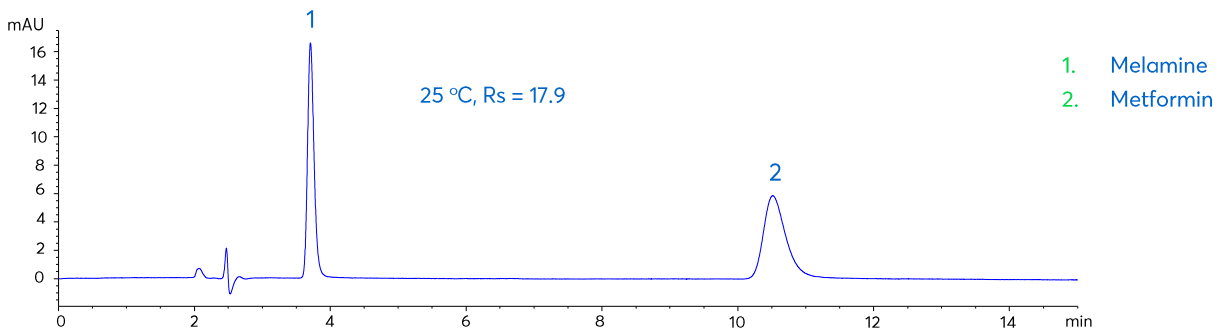


Application note #C-13191

Separation of Metformin and Melamine using the Avantor® Partisil 10 SCX

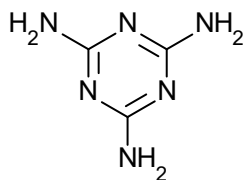


Method Details

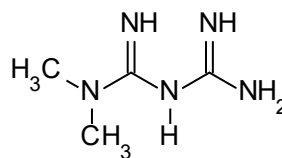
CONDITIONS

Column:	Avantor® Partisil 10 SCX (Metformin)
Particle Size:	10 µm
Dimensions:	250 x 4.6 mm
Mobile Phase:	17 g/L ammonium dihydrogen phosphate in H ₂ O, adjusted to pH 3.0 with phosphoric acid
Flow Rate:	1.5 mL/min
Injection Volume:	20 µL
Temperature:	25 °C and 40 °C
Detection:	UV, 218 nm
Method:	USP 37, Metformin Hydrochloride, Organic Impurities

Always check the latest and official method information from the relevant pharmacopoeia prior to analysis.



Melamine



Metformin

ORDERING TABLE

Product	Details	Size	Part Number
Avantor® Partisil 10 SCX (Metformin)	HPLC Column	250 x 4.6 mm	4227-001M
Water	VWR CHROMANORM® super gradient grade	2.5 L	83650.320
Ammonium dihydrogen phosphate	VWR NORMAPUR® analytical reagent	500 g	21305.260
Orthophosphoric acid 85%	VWR NORMAPUR® analytical reagent	500 mL	20624.262